



***SPECIFICATIONS FOR THE PURCHASE OF
ROLL-ON / ROLL OFF
SELF COMPACTING CONTAINERS***

NYC DEPARTMENT OF SANITATION

COLLECTION OPERATIONS – CONTAINERIZATION UNIT

125 WORTH STREET – ROOM 700

NEW YORK, NY 10013

CollectionOperations@dsny.nyc.gov

CONTAINER / COMPACTOR MANUFACTURERS

- PREMIER COMPACTION SYSTEMS
264 LACKAWANNA AVENUE
WOODLAND PARK, N.J. 07424
973.305.6646 OR 800.877.7475
john@pcs-green.com

*****RO/RO SPECS*****

23' LONG X 8' WIDE

8' HEIGHT (WHEN ON RAILS OF TRUCK)

The Department of Sanitation Does Not Endorse any
of these companies or their products. This Booklet is
provided for informational purposes only.

1.0 Scope

These specifications cover refuse containers operationally suitable for use with the Roll-on / Roll-off container type vehicles used by the New York City Department of Sanitation and shall be guaranteed in writing by the manufacturer to be compatible with these specifications. The purchase/owner shall in all cases be responsible for the satisfactory interface of container and service vehicle. Container design shall permit complete discharge by gravity without jogging the container by using the operating controls of the truck and without manual assistance of any kind. The maximum container size permitted to be used with this system is a 35 cubic yard minimum.

Prior to implementing Roll-off Container Service, all new containers will be site tested (EMPTY) for compatibility using a Department of Sanitation Roll-on Roll-off vehicle in the presence of a Department of Sanitation Containerized Supervisor.

- Containers are to be built to **(ANSI-Z 245.30)** waste container safety requirements.
- Containers are to be built to **OSHA** standards.
- Container to have 3-inch taper for the entire length of the container.
- Container to have a ram forward option.

2.0 MATERIALS OF CONSTRUCTION

Container floor and walls shall be continuously welded inside and outside. Roof shall be welded continuously outside, and stitch welded inside. All welds and edges shall be grounded smoothly, suitably reinforced with steel structural members welded in place and shall meet minimum Department of Sanitation structural standards as shown on the Department of Sanitation reference drawings and as detailed below.

- OVERALL WIDTH: Shall not exceed 96 inches
- OVERALL HEIGHT: Shall not exceed 96 inches (as measured from the bottom of the rails)
- OVERALL CHASSIS LENGTH: Shall be 23 feet (not including container nose rollers)

3.0 MINIMUM STRUCTURAL SPECIFICATIONS

The information listed below are the MINIMUM specifications for the construction of DSNY compliant containers.

- HEAD SHEET PANNELS: Upper Side, top, and head sheet panels shall be of high tensile sheet steel (45,000 P.S.I., tensile strength) 10 gauge or heavier.
- LOWER SIDE SHEET PANEL: (45,000 P.S.I) to be 7 gauge or heavier.
- FLOOR: Seven (7) gauge minimum steel plate, full length of container, two piece maximum, floor to be leak proof.
- CROSS MEMBERS: Under the floor shall be 3 inch channels 3.5 lb. Minimum, C-channels on 16 inch centers.
- FRONT AND REAR ROLLERS: Shall be constructed from standard black pipe, minimum schedule 40 and shall be 8 inches in diameter with grease fittings.
- LONG RAILS: Shall be 6 inches x 2 inches steel tubing, minimum ¼ inch wall thickness, one piece construction.
- FRONT NOSE ROLLERS: Shall be 4 inch O.D. x 6 inch long with grease fittings. Hollow cast rollers not acceptable.
- TAILGATE DOOR: Shall be 10 gauge high tensile steel reinforced, with two ¼" x 6" vertical plate stiffeners for full height of door with 1/2" inch steel plate hinges with 1 1/16" inch pins and grease fittings. Pin to be removable with cotton pin.
- FRAMING: Tailgate to be surrounded with 3 inches x 6 inches x 3/16 inch rectangular tube.
- SAFETY CHAIN: Shall be included to secure the door in the open or closed position, 3/8" minimum. Safety chain to be part of pin and sleeve assembly, attached to the container body side to provide positive door attachment in an open position and plus provide additional door closed safety lock in case of tailgate latch failure.
- TAILGATE LATCH/GASKET: Shall ensure a tight fit in conjunction with appropriate full door seal that shall prevent liquid leakage from the container. Gasket must be replaceable type. *Manually operated ratchet style latches shall be located on both sides of the container tailgate.
- TAILGATE OPENINGS: Shall be full height and width of container above the sump. (Design of the hinges shall permit clean dumping of the container. Door must be have automatic door latches.)
- CONATINER HOOK: Shall be a 1 ½" inch plate
- HOOKPLATE: Shall be 1 inch plate with hook welded to both sides of plate
- PUSH PLATE: Shall be 7/16 inch, steel plate, 18 inches x 66 inches minimum, hinged and pinned to provide access and protection for compacting head. Locking pin and clip to be tethered.
- SIDES OF ROOF AND HEAD BRACES: Shall be (45,000 psi) 10 gauge minimum, high tensile strength at 24 inch on center for rectangular containers only.

MINIMUM STRUCTURAL SPECIFICATIONS...CONTINUED

- **SIDES OF BODY:** Containers shall have no less than two horizontal V crimps in the metal equally spaced running the full length of the container. Horizontal structural stiffeners may be substituted in lieu of V crimps. Statement applies to rectangular containers only.
- **PAINT:** Container shall be scraped, all sharp edges, prepped, primed and painted Green in single stage manufacturer's standard enamel, to prevent corrosion.
- **STENCIL:** Containers must have the site name stenciled on both sides of the container in 8-inch lettering and numbered if more than one.
- **SAFETY STENCIL:**
 - **"WARNING"** On all four sides in 3-inch white letters.
 - **"STAND CLEAR WHEN CONTAINER IS OFF GROUND"** On all four sides, in 1 ½ inch, white letters under **"WARNING."**

WARNING
STAND CLEAR WHEN
CONTAINER IS OFF GROUND

- **CONSPICUITY TAPE:** 3M #980-32, Red/White. Install conspicuity tape around the entire upper rim of the container and the entire circumference of the tailgate. All corners to have angled 12" x 12" White tape
- **IDENTIFICATION PLATE:** Each container shall be affixed with a stamped metal plate bearing the name and address of the manufacturer, the net internal capacity (cubic yards), unladen weight (can be a separate plate), and a unique serial number. The serial number is also to be welded on the main rails.

4.0 CERTIFICATION OF CONTAINER BY MANUFACTURER

The purchaser shall obtain from the supplier a certificate stating the container complies with these DSNY specifications and submit it to the:

NYC DEPARTMENT OF SANITATION
ATTN: CONTAINERIZATION UNIT – COLLECTION OPERATIONS
125 WORTH STREET, ROOM 700
NEW YORK, NY 10013

- The certificate shall contain the following information:
 - Container size and tare weight
 - Site name and address
 - One copy of this certificate shall be retained by the site and made available to the DSNY supervisor.

NOTE: Failure to send the required certificate will delay the site from receiving containerized service.

DSNY CONTACT INFORMATION

CONTAINERIZATION OFFICERS

646-885-4833 / 4683

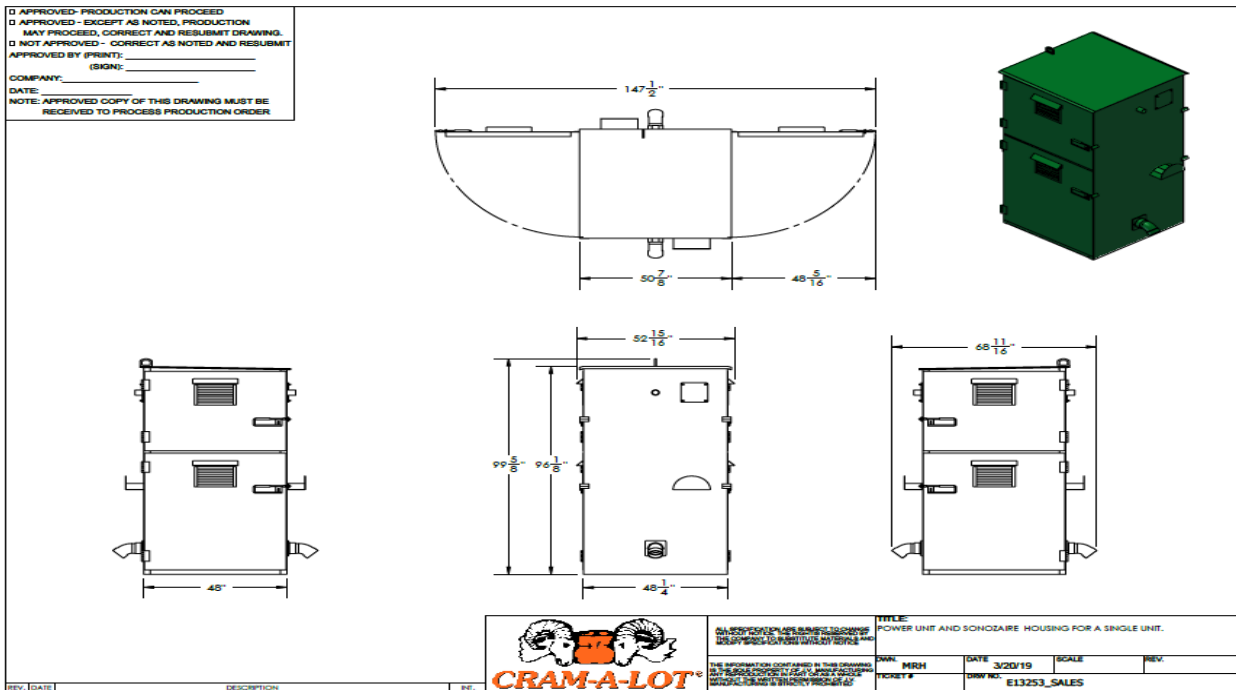
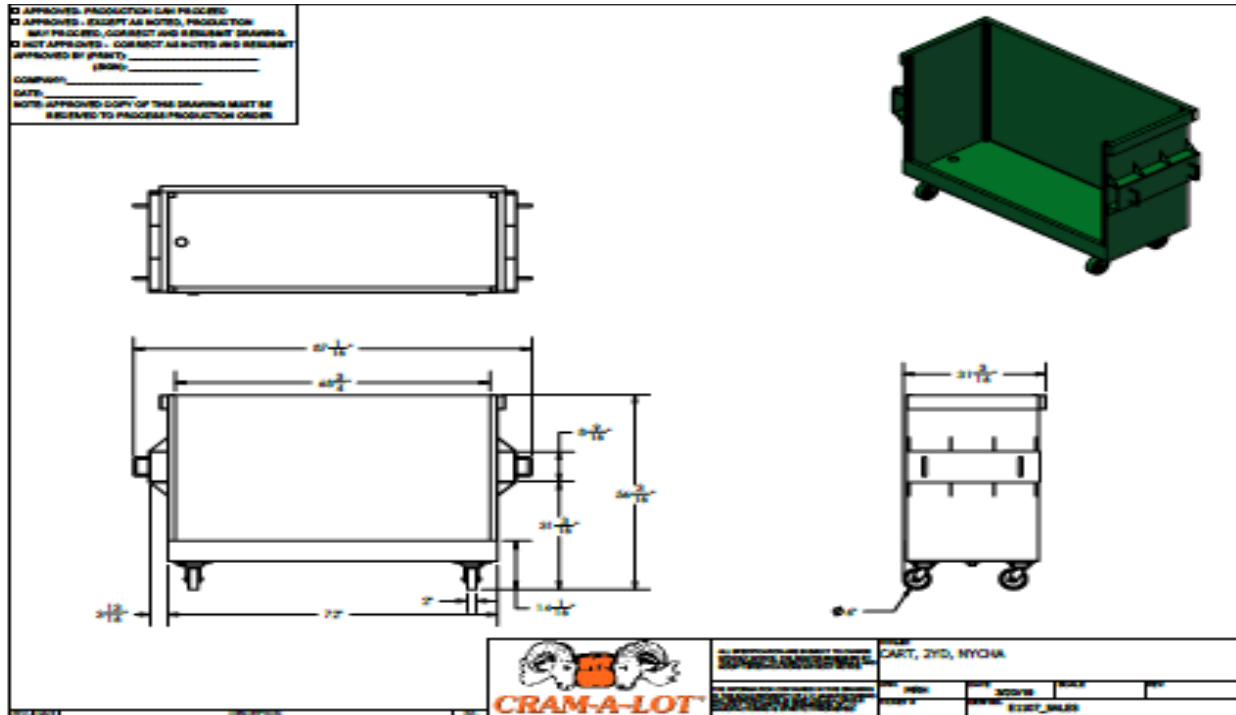
LIABILITY INSURANCE

646-885-4832

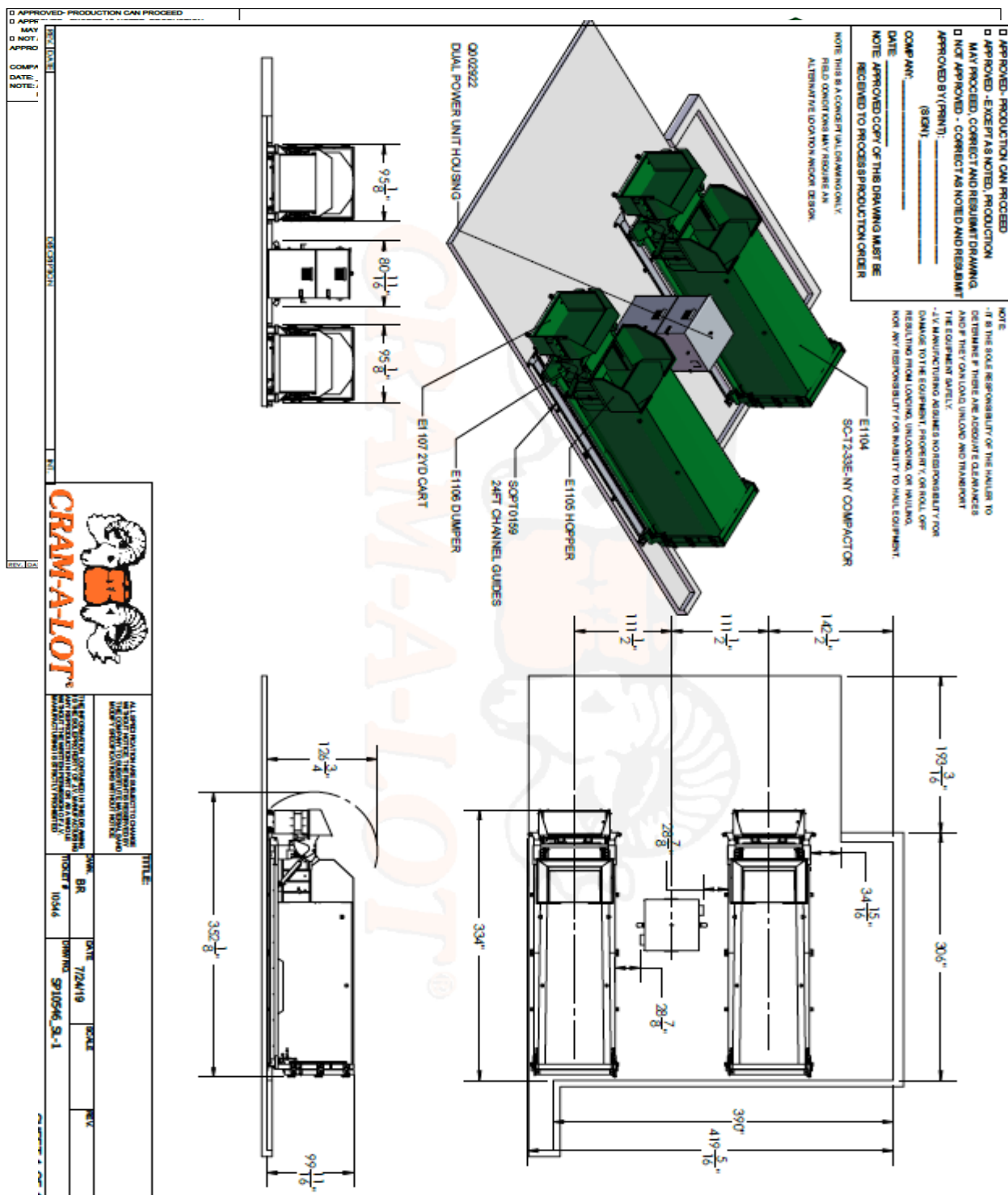
NEW SERVICE DESK

646-885-4828

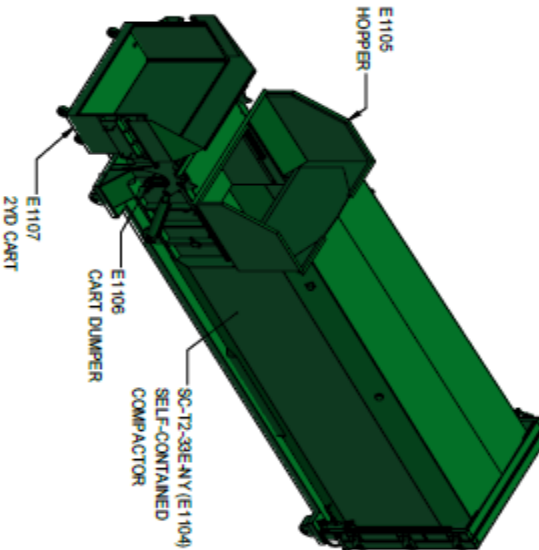
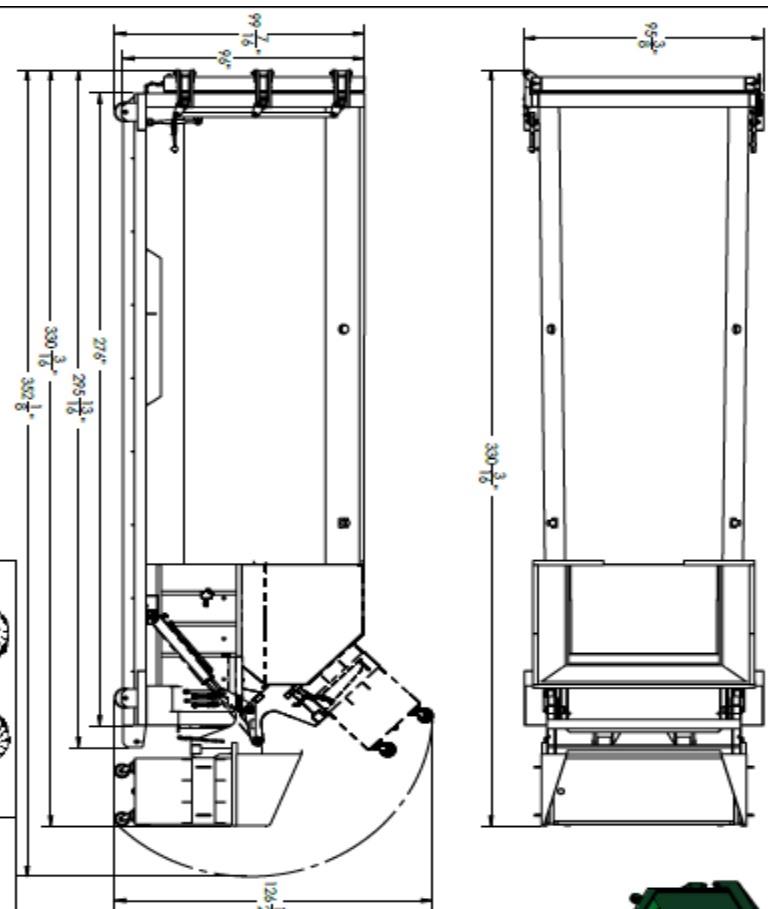
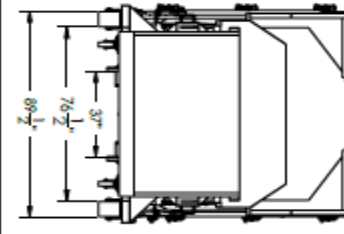





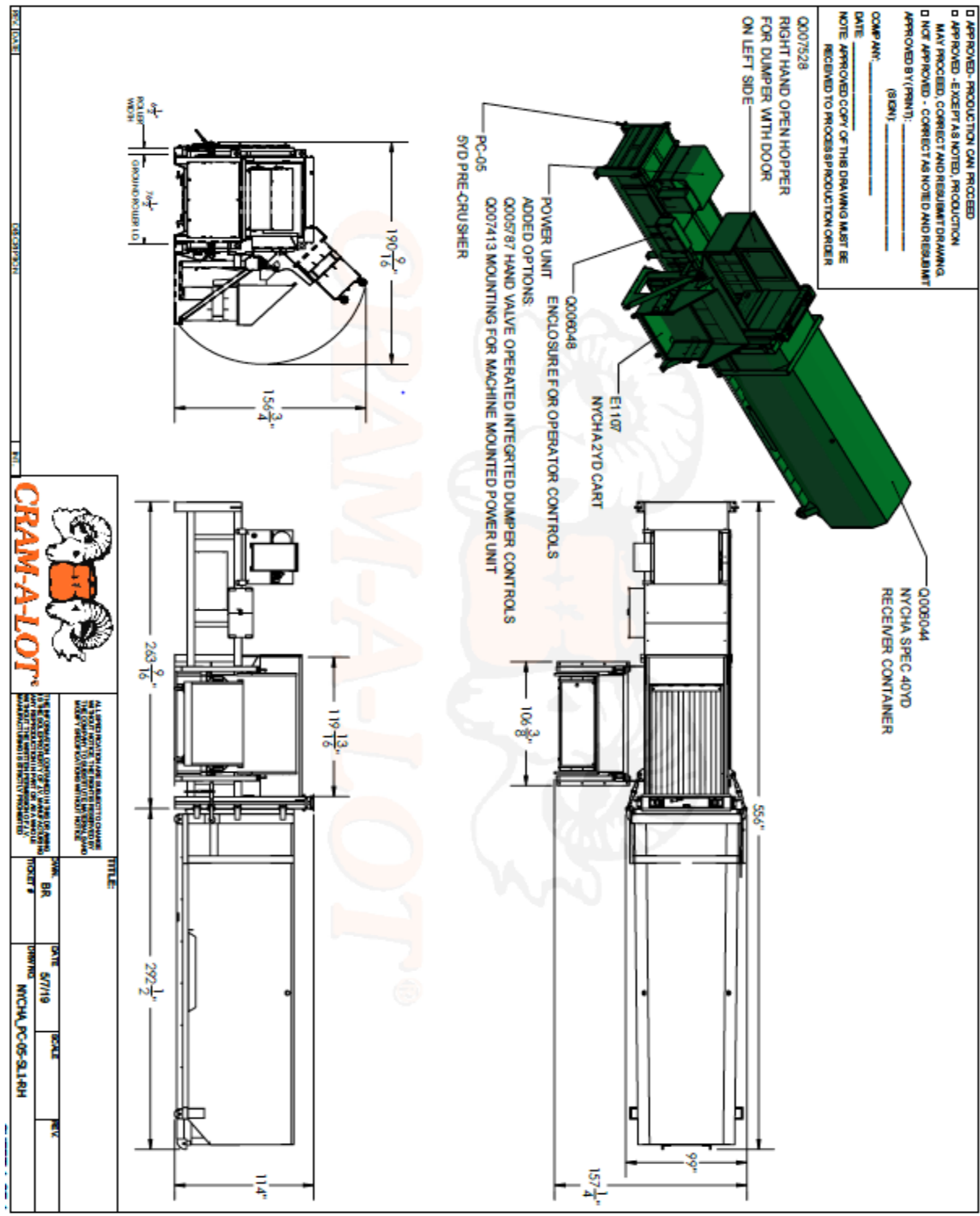
The Department of Sanitation Does Not Endorse any of these companies or their products. This Booklet is provided for informational purposes only.



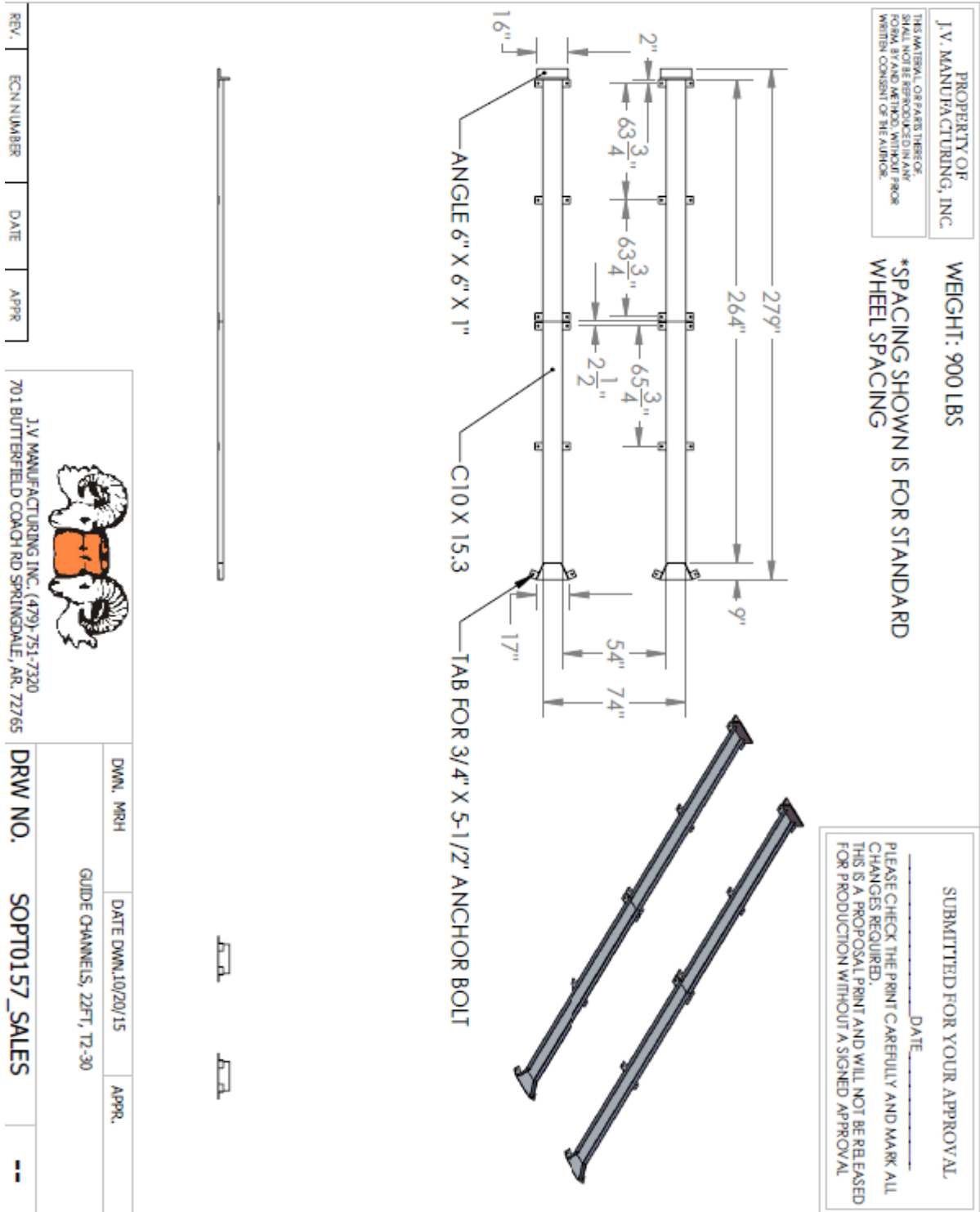
The Department of Sanitation Does Not Endorse any of these companies or their products. This Booklet is provided for informational purposes only.

<p>APPROVED - PRODUCTION CAN PROCEED IF APPROVED - EXCEPT AS NOTED, PRODUCTION MAY PROCEED - CORRECT AND RESUBMIT DRAWING IF NOT APPROVED - CORRECT AS NOTED AND RESUBMIT APPROVED BY (PRINT): _____ (SIGN) _____ DATE: _____ NOTE: APPROVED COPY OF THIS DRAWING MUST BE RECEIVED TO PROCESS PRODUCTION ORDER</p>			
			
		<p>ALL INFORMATION ON THIS DRAWING IS UNCLASSIFIED EXCEPT WHERE SHOWN OTHERWISE UNCLASSIFIED EXCEPT WHERE SHOWN OTHERWISE</p>	
<p>TITLE: TYPICAL CONFIGURATION OF NYCHA SELF-CONTAINED WITH CART DUMPER</p>		<p>DATE: 3/19/19 SCALE: REV:</p>	
<p>PROJECT: NYCHA PROJECT #: NYCHA-SC-514</p>		<p>DATE: 3/19/19 SCALE: REV:</p>	

The Department of Sanitation Does Not Endorse any of these companies or their products. This Booklet is provided for informational purposes only.



The Department of Sanitation Does Not Endorse any of these companies or their products. This Booklet is provided for informational purposes only.

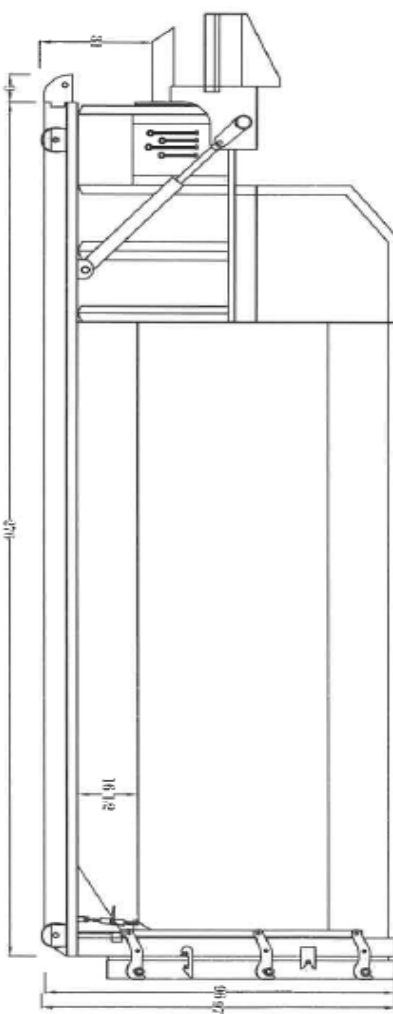
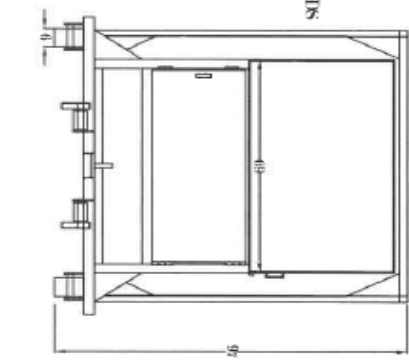


The Department of Sanitation Does Not Endorse any of these companies or their products. This Booklet is provided for informational purposes only.

PROPERTY OF:
EAST COAST CONTAINERS
1000 WOODBURN, CHICAGO, ILLINOIS 60644-3000
REPRODUCED IN ANY FORM BY ANY METHOD,
WITHOUT THE WRITTEN CONSENT OF THE AUTHOR

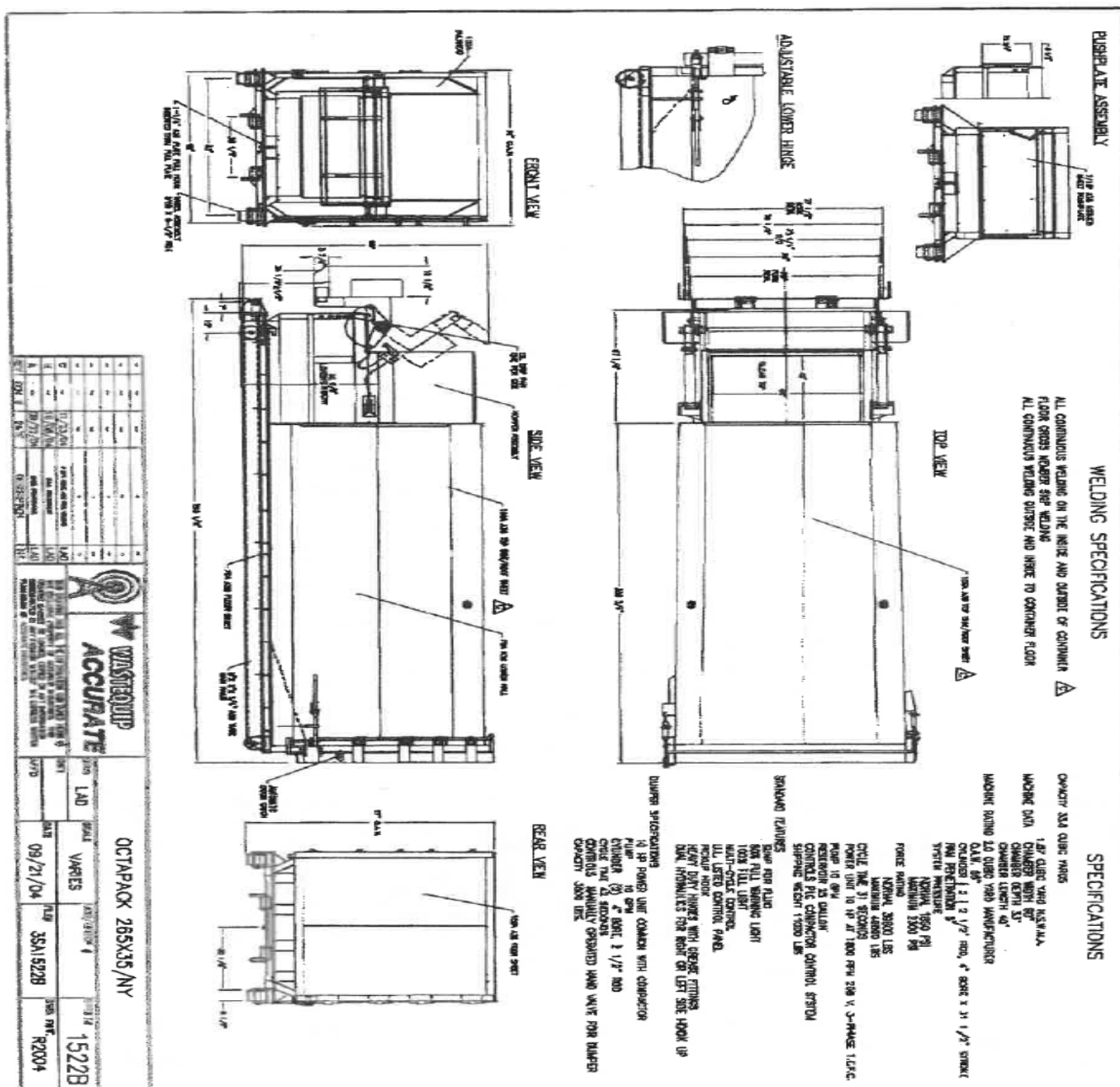
SPECIFICATIONS

CAPACITY: 31 CUBIC YARDS
CHARGE BOX CAPACITY (AIRG. RATING): 2 CUBIC YARDS
INDUSTRIAL RATING: 124 CUBIC YARDS
CLEAR TOP OPENING (LAWY): 42" x 57.34"
CAPACITY PER HOUR: 133 CUBIC YARDS
CYCLE TIME: 35 SECONDS
TOTAL MAXIMUM FORCE: 40,800 LBS
NORMAL RAM FACE PRESSURE: 22.7 PSI
MAXIMUM RAM FACE PRESSURE: 29.0 PSI
ELECTRICAL MOTOR: 10 HP
VOLTAGE TRI VOLTAGE: 308-230/400
PUMP: 10.5 GPM
TWIN CYLINDERS
HYDRAULIC CYLINDER: BORE 4"
HYDRAULIC CYLINDER: ROD 2"
HYDRAULIC CYLINDER: STROKE 37"

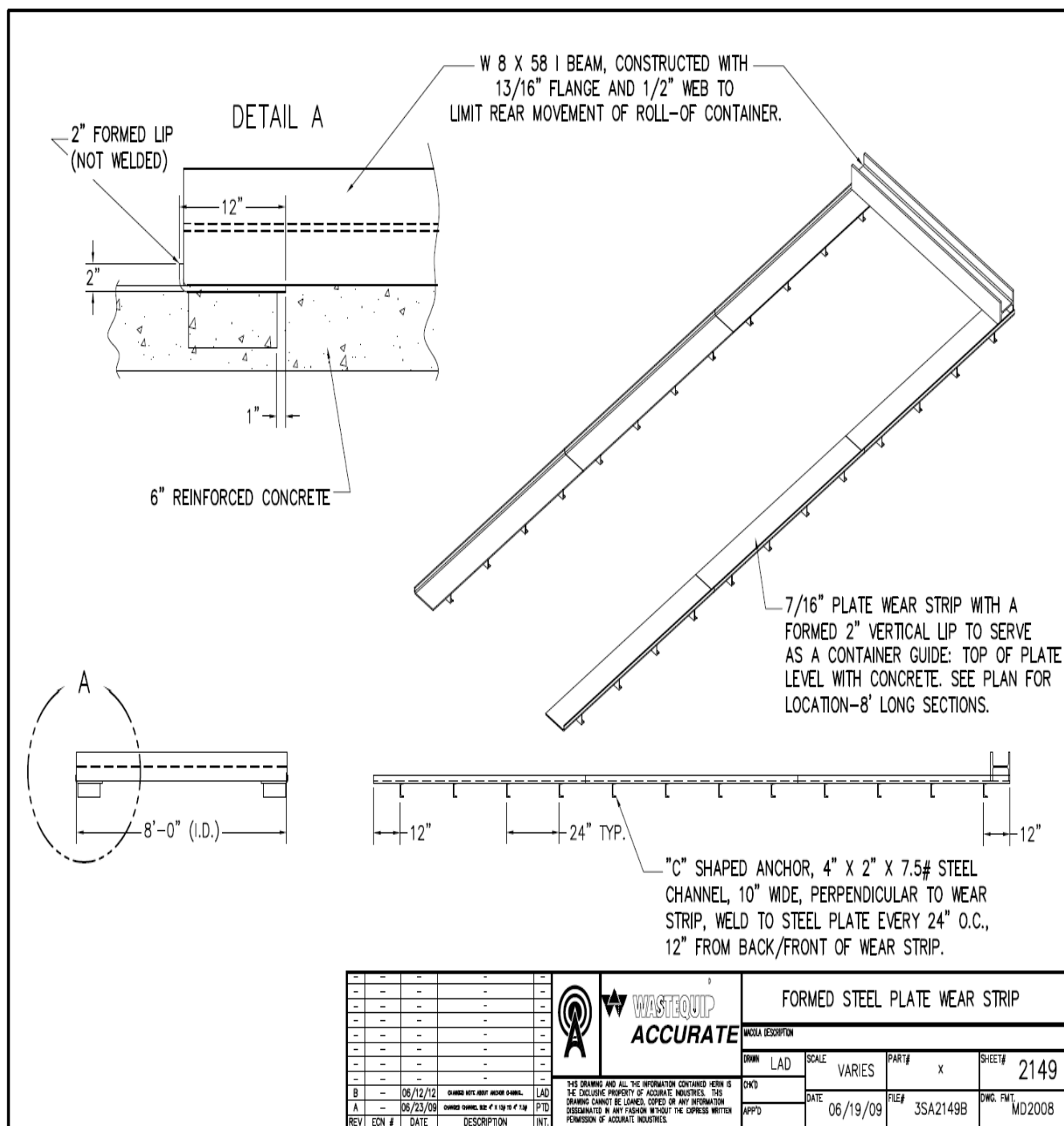


CONFORMS TO NYC DEPT OF SANITATION SPECIFICATIONS	EAST COAST CONTAINERS 211 BROOKSIDE RD WATERBURY CT 06708 (303) 587-8833	MODEL # ECC-SG-31-23 31 YD SELF CONTAINED COMPACTOR HYDRAULIC CAPT DUMPER (39" HEIGHT)
SCALE: NONE		
DATE: 9/8/90/6		

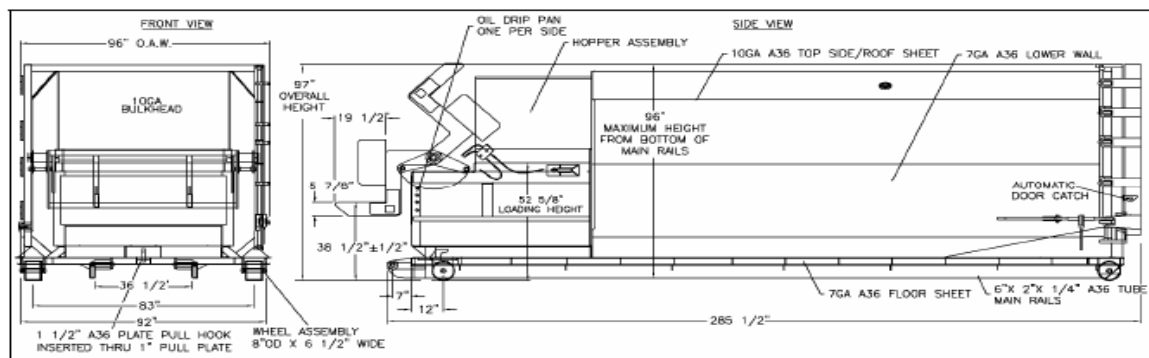
The Department of Sanitation Does Not Endorse any of these companies or their products. This Booklet is provided for informational purposes only.



The Department of Sanitation Does Not Endorse any of these companies or their products. This Booklet is provided for informational purposes only.



The Department of Sanitation Does Not Endorse any of these companies or their products. This Booklet is provided for informational purposes only.



MODEL 265X35/NY SELF CONTAINED GENERAL SPECIFICATIONS

GENERAL SPECIFICATIONS		STANDARD FEATURES
Compactor:	Container:	WARRANTY: One Year Parts and Labor
Mfg's Rating 2.00 Cu Yd.	Capacity: 31.5 Cubic Yards	BOOST, OVER-RIDE/JOG CONTROLS: To Clear Compaction Chamber – Manual Control
WASTEC Rating 1.57 Cu. Yd.	Fire Ports (2)	COMPACTION CHAMBER: Hi-Strength Steel Plate; ½" Floor Plate
Clear Top Opening 40"x 60"	3" Floor Channels @ 16" CL	HYDRAULIC COMPONENTS: JIC Approved; 3000PSI Rated
Packing Pressure PSI Normal 39,800 lbs. 1850 Maximum 49,500 lbs.2300	6" x 2" x ¼" Structural Tubes with Standard 36-½" ID Understructure	ELECTRICAL COMPONENTS: UL Approved, Allen Bradley PLC Controls
Cycle Time: 31 seconds	Single End Pick Up	MULTI-CYCLE CONTROLS: Standard – Field Adjustable or Password Protected PLC Programming
Cylinders:(2) By - Pass Design - 4" x 2½"x 31½"	7 Ga. Floor Sheet	KEY OPERATED START: Multi-position switch w/Packout Mounted on Power Unit
Ram Penetration: 5.9"	1 ½" Steel Hook thru 1" Pull Plate	LIGHTS: 80% Part Full and 100% Container Full with 15% Boost Pressure Capacity When Light Comes On
Floor Thickness: ½"	(4) 8" diameter x 6½" wide wheels	TRASH GUARD: Prevents Waste From Getting Under Ram Floor – Allows for Washout Under Compactor
Steel Retainer Teeth on Breaker Bar	Solid Steel Bullnose w/4" x 6" rollers w/grease fittings	DOOR BINDERS: (2) Ratchet Binders (1 each side) for Full Rear Door Container Seal
Motor 10HP TEFC 208/230/460, 3 Ph, 60 Hz	7 Ga. A36 Lower Wall Sheet	REAR DOOR BUBBLE STYLE: Fully Gasketted w/Reinforcement
Reservoir: 25 Gallon	10 Ga.A36 Upper Wall/Roof	INTEGRATED CART DUMPER: 3500 Lb. Cap. – (2) 4" x 2" x 24" Hydraulic Cylinders Mounted on Compactor Sides
Hydraulic Pump:10.0 GPM	(4) Machined Slotted Hinges	UNIT DIMENSIONS: 8'0" Wide x 8'0" High from bottom of rail 97" Overall Height x 23'0" Long
Integrated Compactor & Cart Dumper Controls	Fully Gasketted Door w/ Ratchet Binders Both Sides	SAFETY: Complies with ANSI Z245.2 Safety Standard



Wastequip Accurate specifications are subject to change without notice in order to accommodate improvements to its equipment.

DESIGNED TO MEET NYDS SPECIFICATIONS

EXCLUSIVE NYC DISTRIBUTOR:
Enviro Equipment Sales, LTD.
516-354-1212 FAX: 516-354-2434

**WASTEQUIP
ACCURATE**

The Department of Sanitation Does Not Endorse any of these companies or their products. This Booklet is provided for informational purposes only.

revised 12/8/2004
for Drwg. #35A1522B rev C



COMPACTOR MODEL 265X-35/NY

CHARGING BOX CAPACITY

1)	Manufacturers Rating	2.00 CU. YD.
2)	Wastec Rating:	1.67 CU. YD.
3)	Hopper Width: ID	60.00"
4)	Hopper Length: ID	40.00"
5)	Ram Height:	30.00"
6)	Ram Penetration:	6.88"
7)	Total Unit Weight With P.U.	11,000 LBS

ELECTRONIC-HYDRAULIC

1)	Motor HP:	10	Service Factor	1
	Motor RPM:	1800	Housing Type	TEFC
2)	Pump GPM	10	Auxiliary GPM:	0.00
	Pump Type		Fixed	GEAR
			Allignment:	CROSS
3)	Cylinders	2		

RAM DETAILS

- 1) 1/2 inch thick ram plate
with 3/4 inch thick stiffener plates
- 2) Ram base is 3/4 inch flat bar
with 6 x 2 tube framing
- 3) Ram top is 1/4 inch plate
with 4 inch channels @ 10 inch spacing
- 4) Ram sides are framed with 1/4 wall tube

4)	PSI Reg:	1850	PSI MAX:	2300
	Ram Force:	39800	MAX RAM FORCE	49,500
	Ram Force PSI:	22.11	Ram Max PSI	27.5
5)	Cycle Time SEC:	31		
			Cu Yd Per HR	181
	Tank Gal	25		
	PU Location	Remote		
	Control Circuit	PLC		
	Ram Cycle Control	PLC		
	Automatic cycle			
	Turn Key Switch			
	Ram Extends, retracts and stops automatically			

PACKER FABRICATION DETAILS

- 1) 1/2 inch thick floor plate
with 2 x 3 tube @12 inch spacing
- 2) 1/4 inch thick side plates with
4 x 3 tube vertical stiffeners
- 3) Top rail is 6 x 3 x 3/16 tube
Bottom rail is 6 x 3 x 3/8 angle-guasseled
- 4) Breaker bar 6 x 6 x 3/4 angle
- 5) 1 x 4 flats stiffened with 4 x 3 angle tied
to 4 x 4 angles provide rear stability
- 6) 12 ga. Top deck sheet is standard
- 7) 7/16" steel formed pushed plate - full width

INCLUDED FEATURES

80% FULL warning light
Full container indicator light
UL Listed control panel
Final packout pressure override
Multi-Cycle Control - Adjustable w/Ram Stop Forward
Dual hydraulics for right or
left side hook up.

Total Unit Capacity

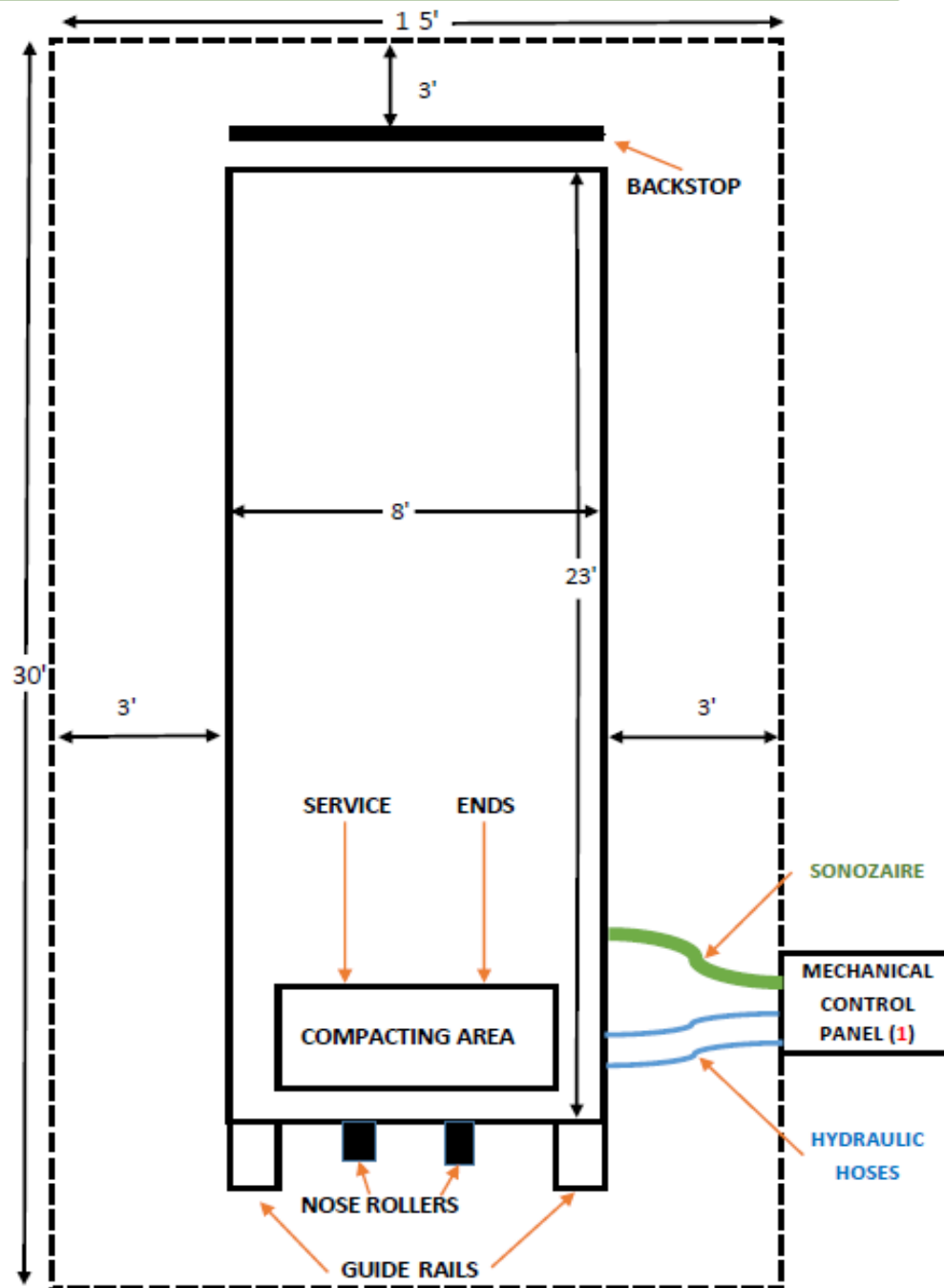
31.22 cu. yds. (WASTEC Rating)
33.60 cu. yds. (Mig. Rating)

CONTAINER SPECIFICATIONS:

7 ga. Floor with 3 inch channels @ 18" centers
6 x 2 x 1/4 tube rails, 36 12 inch I.D.
Solid steel bullnose, compactor and only
1 1/2" steel pull hook thru 1" hook plate
4 inch dia. Rollers 6 inches long
7 Ga. A36 Lower Wall and 1/2 roof - 1 pc. each
10 Ga. A36 Upper Wall and 1/2 roof - 1 pc. each side
(4) pieces total container sides and roof - full welded insides and out
10 Ga. A36 Rear door (2 pieces) and Bulkhead sheets - full welded inside or out
(4) 8" dia. x 6 1/2" wide steel wheels

The Department of Sanitation Does Not Endorse any of these companies or their products. This Booklet
is provided for informational purposes only.

TYPICAL SET-UP FOR DSNY APPROVED CONTAINER SITE



(1) AS PER OSHA, COMPACTING AREA MUST BE VIEWABLE FROM CONTROL PANEL, WHICH MAY BE POSITIONED ON EITHER SIDE OF COMPACTOR

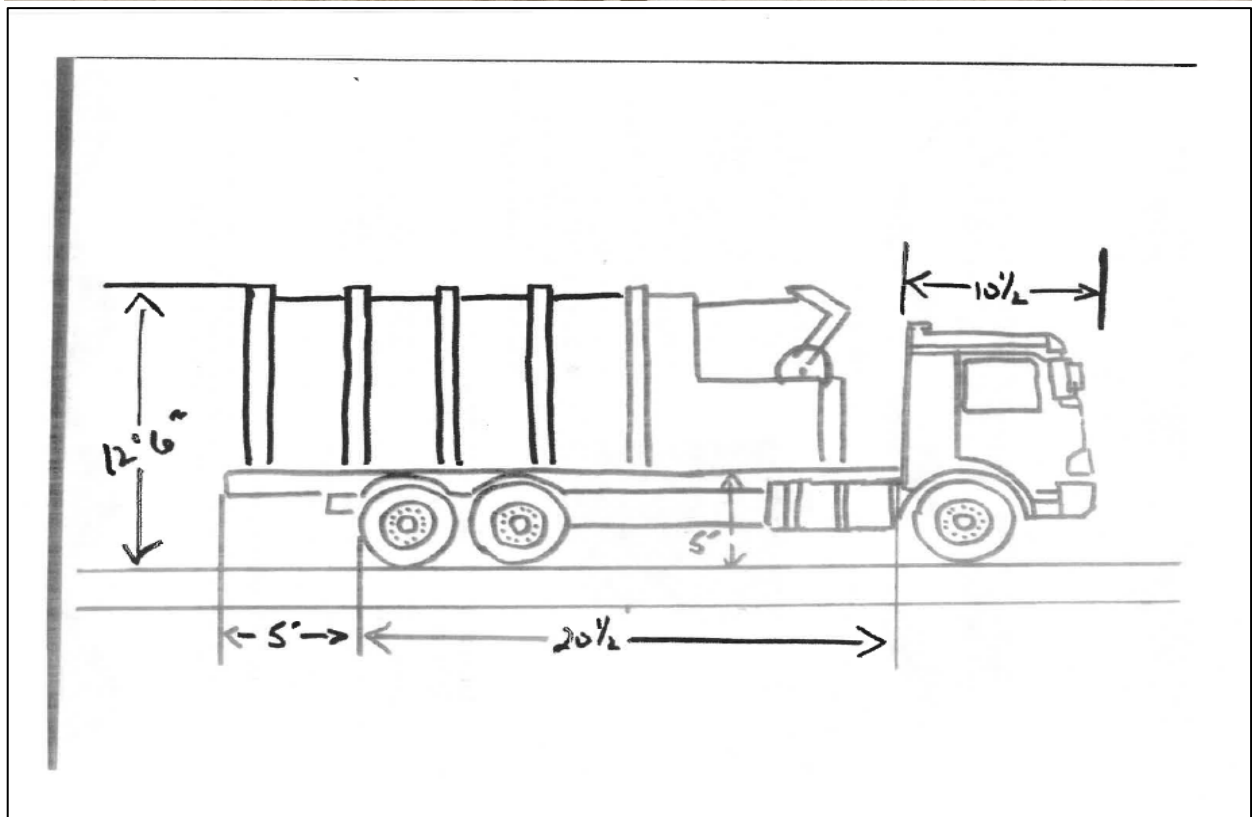
*CEMENT PAD MINIMUM SPECIFICATIONS 15' X 30' FOR CONTAINER ONLY (DOTTED LINES)

*MUST HAVE MINIMUM 3' CLEARANCE ON ALL SIDES OF CONTAINER

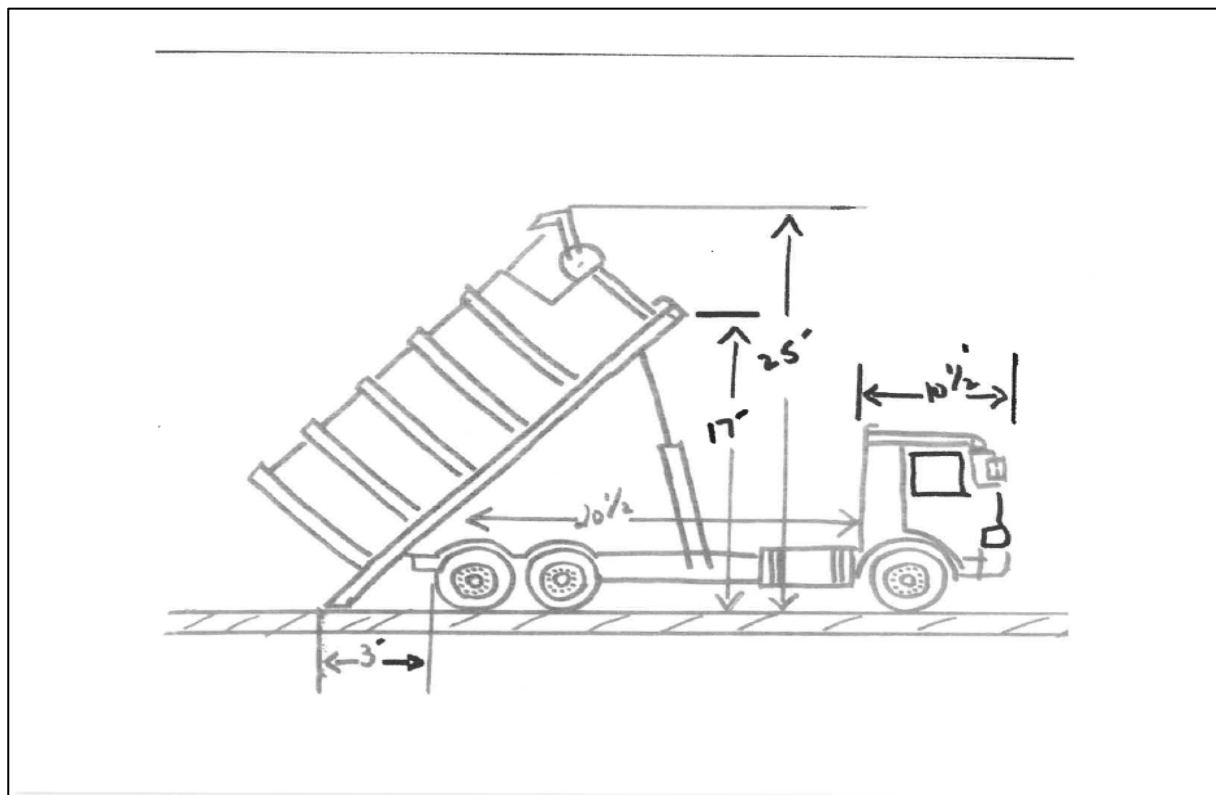
DSNY Roll On/Roll Off Vehicle Data Sheet

Vehicle Code	23Z-001 to 999
Chassis Manufacturer	MACK TRUCKS INC
Body Manufacturer	GALBREATH
Prime Vendor	GABRIELLI TRUCK SALES LTD
Model	GU813
Model Year	2018
Engine	MACK MP8
Engine FAMILY #	HVPTH12.8G01
Trans	ALLISON 4500RDS WITH RETARDER
G.V.W.R. (Lbs.)	85,000
Tare Weight	34,000 LBS.
Length (Overall)	37'
Height	ACTUAL 11' 0" PLACARD 11' 4"
Width (Overall)	108"(9 FT)
Wheel Base	263
Maximum Speed	55 MPH
Body Capacity	30 CU YDS CONTAINER
Turn Radius	40FT
Tire Size	425/65R22.5 12.00R24
Front Tire Pressure	Front Axle = 120 PSI
Rear Tire Pressure	Forward/Rear = 120 PSI Rear/Rear = 120 PSI
Fuel Tank Capacity	50 GALLONS
Fuel Type	ULTRA LOW SULFUR DIESEL
Hyd. Tank Capacity	50 GALLONS
Urea/Diesel Exhaust Fluid	11.8 GALLONS
Number of Axles	3

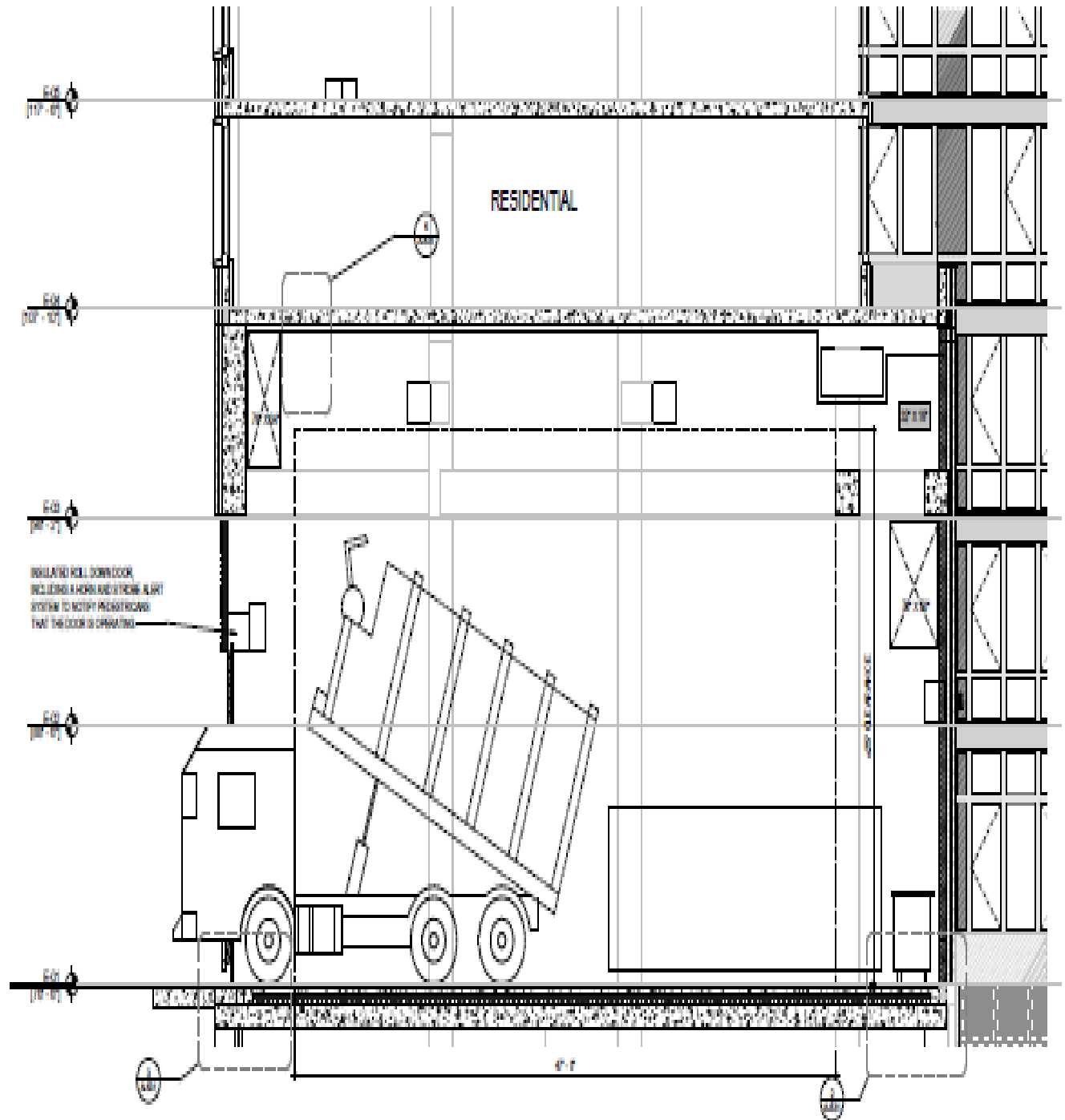
FOR GENERAL CONTAINERIZATION SERVICE, PLEASE REFERENCE THE FOLLOWING EQUIPMENT DESIGN SPEC(S):



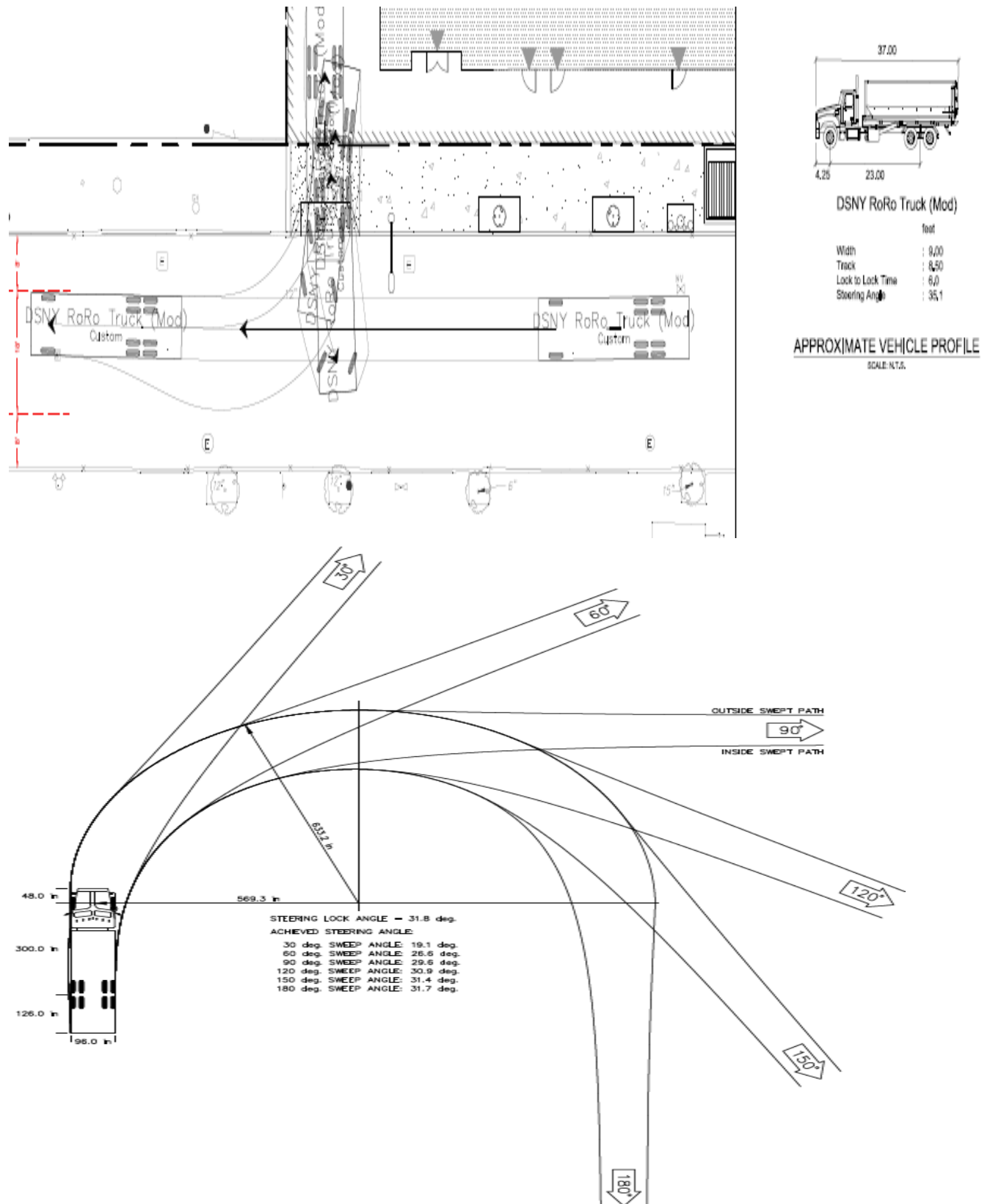
FOR GENERAL CONTAINERIZATION SERVICE, PLEASE REFERENCE THE FOLLOWING EQUIPMENT DESIGN SPEC(S):



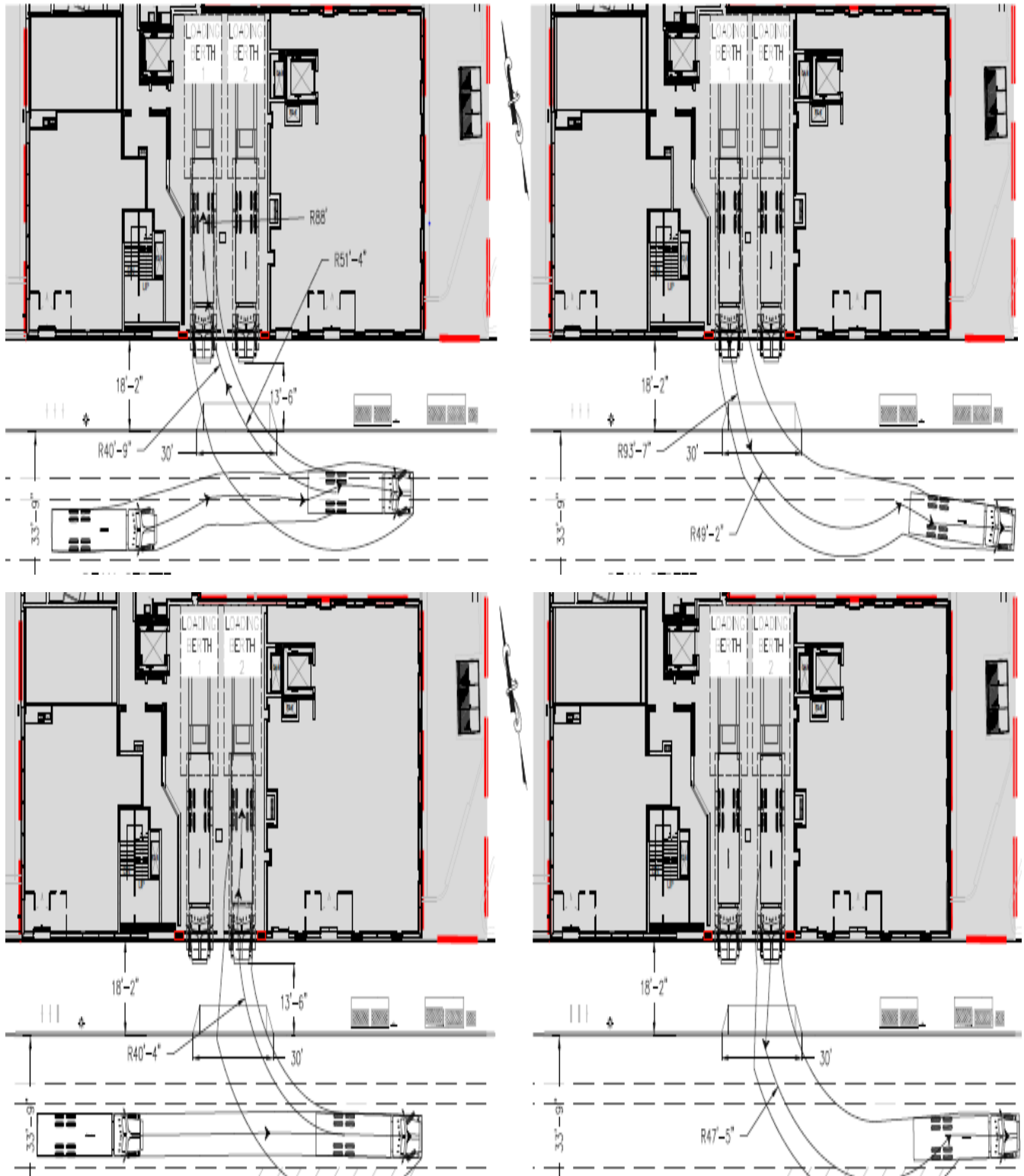
FOR INDOOR CONTAINERIZATION SERVICE, PLEASE REFERENCE THE FOLLOWING EQUIPMENT DESIGN SPEC(S):



Please reference the following example(s) regarding equipment turning analysis:



Please reference the following example(s) regarding equipment turning analysis:

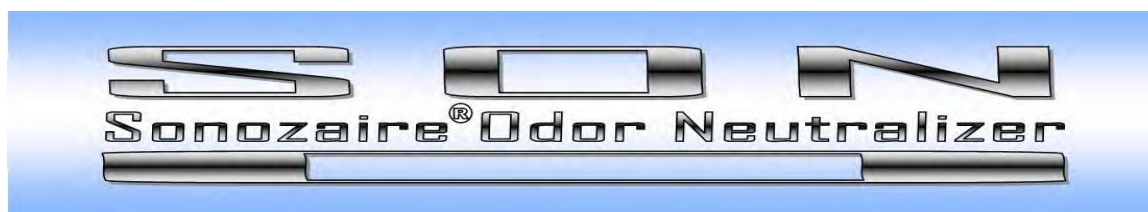


CITY OF NEW YORK
DEPARTMENT OF SANITATION

Certificate of Approval
for
Refuse Compactor System

The approval contained herein is made to Section C-26-1417.4 of the Administrative Code of the City of New York and to the “Requirements for Obtaining Approval House Type Compactors” issued hereunder (hereinafter referred to as the “Requirements”). The approval is made subject to continued compliance by the applicant for such approval with the provisions of the requirements and with the conditions listed herein. Violations of any of such provisions or conditions may constitute grounds for suspension or revocation, or amendment of such approval. Special attention is directed to the following two provisions.

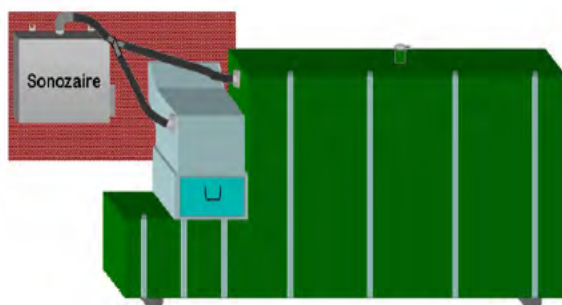
1. All proposed modifications to an approved compactor system, including modifications to an approved container which is part of such system, shall be submitted to the Department of Sanitation determination as to whether the proposed modification will constitute a change of model and thereby require new approval. This submission shall precede any installation of the modified compactor.
2. Only containers certified by the Department of Sanitation to be compatible with an approved compactor system may be used with such system.



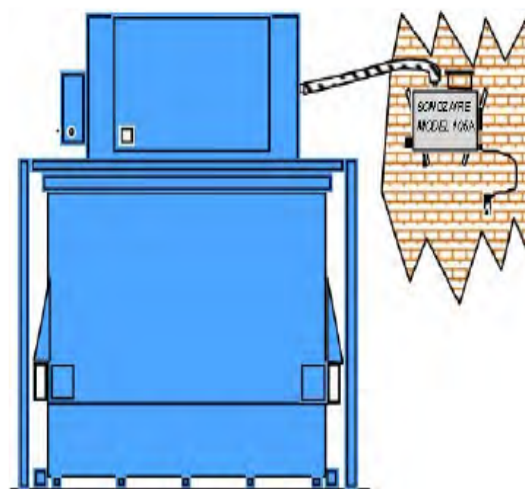
Sonozaire Odor Neutralizers generate ozone from the oxygen in the air. Ozone is the same mildly refreshing substance present after a heavy thunderstorm. It indicates that the odors and germs in the area have been destroyed (oxidized). Injecting ozone directly into the location of the odors destroys them immediately and continuously. Destruction of odor results is a clean-smelling area that does not harbor and protect bacteria—ending complaints and assuring customer satisfaction.

The Sonozaire models cost only pennies per day for operation and require only periodic cleaning. The Sonozaire models are 100% adjustable to match the odor levels of the garbage. Not only do all models remove odors, but they also prevent fermentation and retard bacterial growth and slime production.

The Sonozaires' newest model 105A (indoor) is designed for small garbage compactor/containers or standard refuse containers, for the control of odors. It works extremely well in waste rooms for apartments.



Sonozaire Models Work on Both Stationary and Self-Contained Compactors



Sonozaire Model 105A Wall-Mounted Near a Vertical Compactor

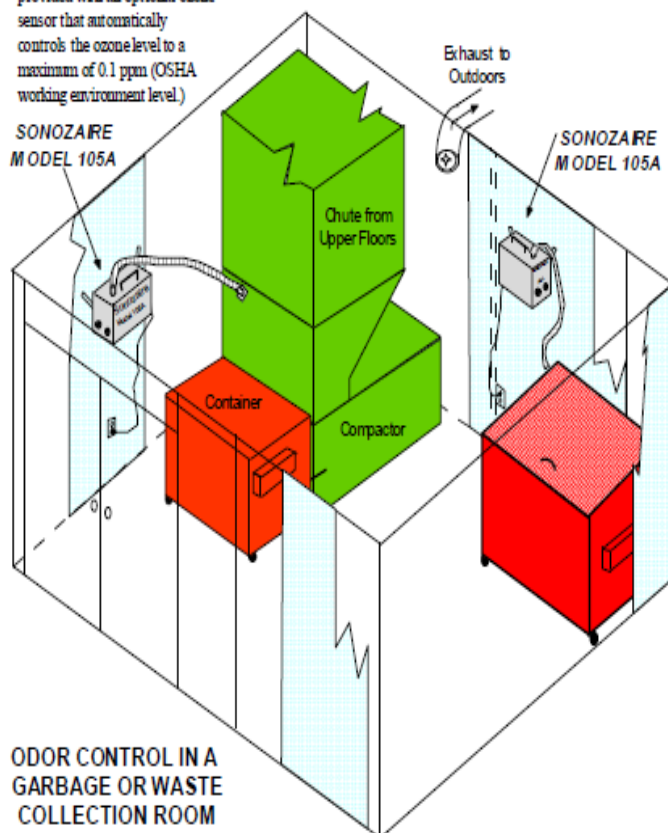
Sonozaire Features:

- ♦ Destroys Odor Molecules Electronically & Prevents Pest Attracting Odors
- ♦ Uses No Chemicals
- ♦ Installs in Minutes
- ♦ Plugs into 115V Outlet (220V, 50Hz Optional)
- ♦ Low Operating Cost
- ♦ Simple Dial Operation to Match Odor Level
- ♦ Quick Connection & Disconnection from Compactor/Container
- ♦ Provides Cooling to Compactor/Container
- ♦ Free Technical Support

Sonozaire Odor Neutralizer

All Sonozaire Models can be provided with an optional ozone sensor that automatically controls the ozone level to a maximum of 0.1 ppm (OSHA working environment level.)

SONOZAIRE
MODEL 105A



Optional Items:

- ♦ PVC Flex Hose
- ♦ Alum. Flanges
- ♦ Alum. Y Fittings
- ♦ PVC Elbows
- ♦ SS Hose Clamps
- ♦ Weatherproofing
- ♦ Wall Mounting Kit
- ♦ 24 Hour Timers (Programmable)
- ♦ Ozone Sensors



Model 630A shown with weather-proof cover over controls, flexible hose, Y outlet, flanges, and hose clamps.

The Department of Sanitation Does Not Endorse any of these companies or their products. This Booklet is provided for informational purposes only.





sanitation

REFUSE & RECYCLING
COLLECTION OPERATIONS
125 Worth Street, Room 700
New York, NY 10013
Telephone (646) 885-4830
Fax (212) 788-3915

Date:

Dear Sir

You must enter into a service agreement with the city, holding the city harmless in the event of an accident associated with our collecting refuse on your property. You must also obtain insurance as specified in the service agreement in which the City of New York & the NYC Department of Sanitation are named the insured, or additional insured.

The Department will not commence service until either a policy of insurance or a certification of insurance is received. While it is necessary that the policy be received by this office, service will be commenced upon receipt of a property issued certificate conforming to the following requirements.

1. The insurance to be furnished shall be either contracted liability policy or other type of policy under which the City of New York is name insured or additional named insured to any existing policy.
 - A. **Certificate Holder Will Be:**
N.Y.C Department of Sanitation
125 Worth Street, Room 700
New York, N.Y. 10013
 - B. **Indicate in the Description of:**
Operations/Locations/Vehicles/Exclusions added by Endorsement/Special provisions "the City of New York & NYC Department of Sanitation are included as Additional insured." Please include your name, address and site number.

The Limited of Liability are:

- A. **General Aggregate – \$2,000,000 and \$1,000,000 per Occurrence**
 - B. **Property Damage - \$100,000**
2. Indicate on the certificate, the type of Insurance as General Liability Occurrence Insurance.

3. THE FOILOWING SIX (6) ENDORSEMENTS MUST BE TYPED ON THE INSURANCE POLICY CERTIFICATE EXACTLY AS THEY APPEAR BELOW; OTHERWISE THE INSURANCE WILL NOT BE ACCEPTABLE.

a. This policy or certificate has been issued to insure the City of New York the limits of liability specified in such policy or certificate as required under paragraph 5 of a certain Collection Agreement between the City of New York and

----- executed on -----

b. **NOTICE OR ACCIDENT** - Notice of accident shall be given to the company within sixty (60) days after notice to the commissioner of Sanitation or such accident.

c. **NOTICE OR CLAIM** - Notice of claims shall be given to the company within sixty (60) days after such claims shall be filed with the Comptroller of the City of New York.

d. **NOTICE OF CANCELLATION OF POLICY** - The Policy shall not be cancelled, terminated, modified or changed by the Company unless ten (10) days prior written notice is sent to the Insured by registered mail and addressed to the Commissioner of Sanitation, 125 Worth Street, New York, NY 10013, nor shall it be cancelled, terminated or modified by the owner securing this policy without the prior consent of the Commissioner of Sanitation.

e. **VIOLATION OF ANY OF THE TERMS** - of any policy issued by the insurance Company to the owner shall not invalidate this policy, as far as the Department of Sanitation is concerned.

f. **NOTICE UNDER THE POLICY** - shall be addressed to the City of New York, Department of Sanitation, Commissioner, 125 Worth Street, New York, NY 10013.

PLEASE NOTE:

FOR PURPOSE OF FINISHING AN ACCEPTABLE POLICY OR CERTIFICATE AS SET FORTH IN PARAGRAPH #5a ABOVE, YOUR BROKER OR INSURANCE COMPANY MAY INSERT THE DATE ON WHICH THE COLLECTION AGREEMENT WAS EXECUTED BY YOU.

DIRECT ANY INQUIRIES TO:
COILECTION/CONTAINERIZATION OFFICE
TELEPHONE: (646) - 885 – 4830
FAX: (212) - 788 - 3769



sanitation

REFUSE & RECYCLING
COLLECTION OPERATIONS
125 Worth Street, Room 700
New York, NY 10013
Telephone (646) 885-4830
Fax (212) 788-3915

CONTAINERIZATION SERVICE GUIDE LINES

Effective immediately, the Department of Sanitation is revising its procedure for testing new Roll/On Roll/Off compacting containers and E/Z Pack containers. An approval of site and containers are necessary for compliance with Department of Sanitation specifications. Locations will be approved on the following basis:

1. Locations desiring Roll On/Roll Off container service must contact the:

Department of Sanitation
Office of Containerization
125 Worth Street, Room 700
New York, NY, 10013

2. The Office of Containerization will conduct a feasibility to ascertain if containerization is suitable for the location in question and advise the location of the type and size of containers that may be used.

3. Once the location has been approved, the site may install a Roll On/Roll Off container system to the following:

- A) Containers must be compatible with Department of Sanitation equipment, conform to Department of Sanitation specifications for container type and meet all requirements of Tripartite General Order Number 2. No modification to the Department of Sanitation equipment will be permitted.
- B) Sufficient space (including headroom) must be available at site for maneuverability of truck when servicing the location.
- C) Container must dump cleanly without jogging of truck. Containers must be maintained in good working order by the owner.
- D) Density of compacted garbage must meet Department of Sanitation standards of 450 to 700 lbs per cubic yard.
- E) Containers shall not be stored on any public sidewalk or street. If portable E/Z Pack containers on wheels are used, they must be stored in the building or on the building property. Building maintenance personnel must transport the containers into position for service on the day of collection by the E/Z Pack truck. Sanitation personnel are not to handle the containers. They must be removed from the street or any public property after service by the Department by building maintenance personnel.
- F) Equipment and installation must meet the latest industry safety standard (ANSI Z245.1) in addition to City, State and OSHA requirements.

Periodically the containers will be subject to inspection to determine that the above conditions are being met. If the above conditions are not met, then the Department of Sanitation reserves the right to suspend containerized service until the violations have been corrected.